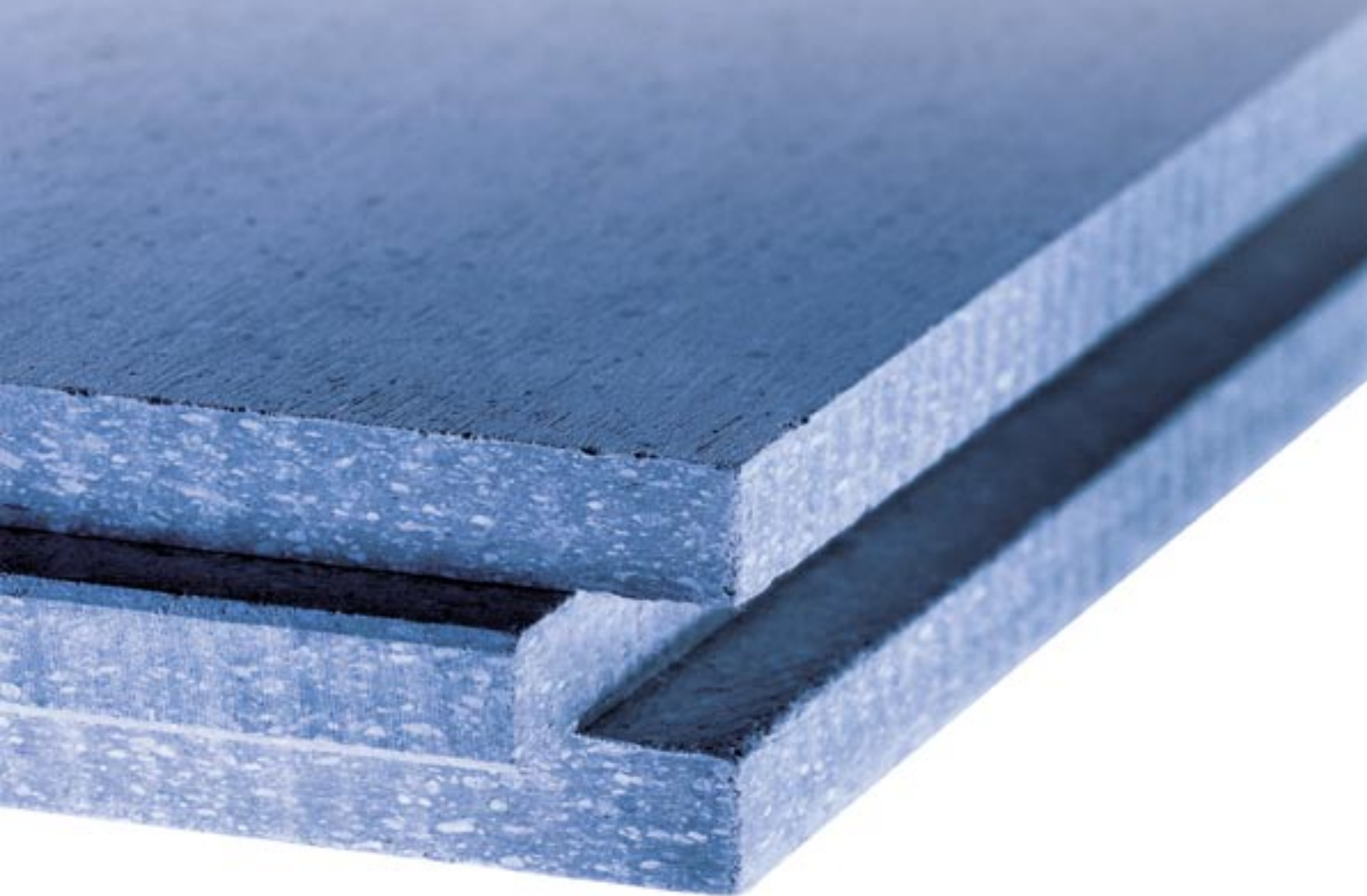




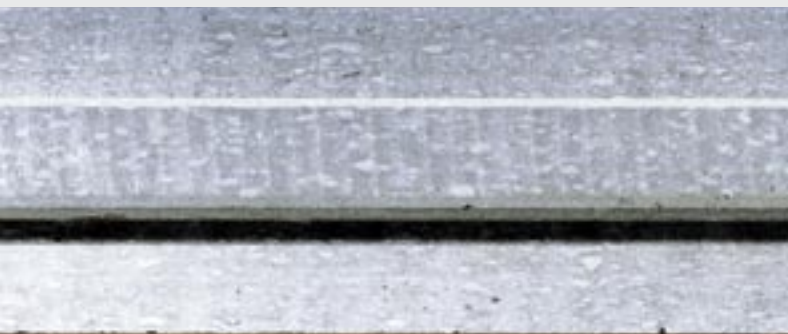
GIFAfloor



non-combustible.



City Gate, Düsseldorf (D)



CocoonClub, Frankfurt (D)

Safety from the floor and onwards.

Alongside the visual effect and functionality, one important aspect is increasingly becoming the focus of attention in planning activities: safety. A requirement that **GIFAfloor** flooring systems perfectly implements in many respects.

All **GIFAfloor** floors are made up of the innovative plaster material **GIFAtec**, the only building material of its kind that is classified throughout Europe with building materials class A1, non-combustible

(acc. to DIN EN 13501-1). Whether used in panelled access floors or sheet-panelled access floors, all **GIFAfloor** systems comply at least with the fire protection requirement F30.

stable.



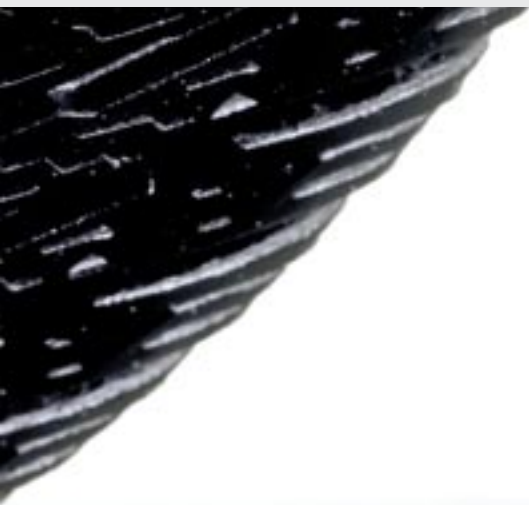
**Taking our work seriously,
and open to your ideas.**

This is probably the best way to describe the character of **GIFAfloor**. You can depend on the durability and high load-carrying capacity of these floors. The cornerstone for the high stability is already laid during the production of the plaster boards. The unique winding process by Knauf Integral determines the homogenous material structure before the

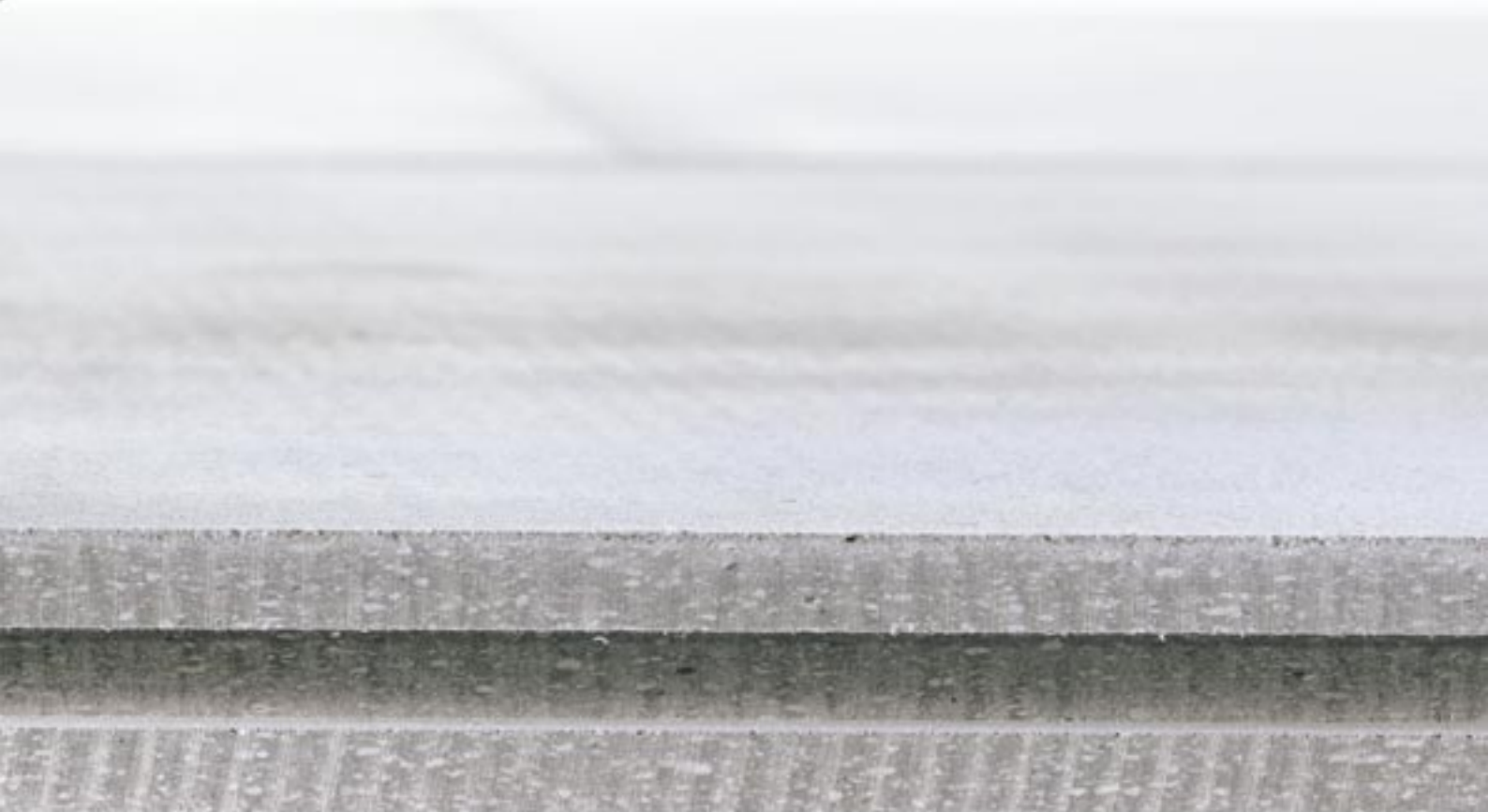
extremely high compressing to 1500 kg/m^3 and more takes place in the subsequent pressing process. You can obtain **GIFAfloor** as panelled access floor green ware or sheet-panelled access floor with tongue and groove edging in various material thicknesses, and with standard or individual grid dimensions. All components are optimally coordinated to

one another. The panels are supplied to the construction site ready-to-lay, a surface primer applied at the factory protects the boards during transportation and laying, ensuring the full hardwearing capabilities of the floor right from the start.

Administrative building, Amorbach (D)



**Administrative building,
Amorbach (D)**



sound-absorbing.



Comfort for all!

The dry laying of **GIFAfloor** offers numerous advantages compared with wet flooring systems. No additional moisture is added to the construction during installation. That is the important thing: **GIFAfloor** requires no drying time at all. So, depending on the project, you can save several

weeks of construction time. Despite the many advantages - we like to walk quietly. A further plus point of **GIFAfloor**: the good insulation against transmitted impact sound. And, when it comes to floor covering options, surface finishing and handling **GIFAfloor** always turns out to be the right choice.

With appropriate accessories like supports, system adhesive, transition profiles or inspection frames, laying is as simple as never before. Flexibility, increased laying efficiency, more advantages. We think you'll like that.



Business Tower, Nuremberg (D)





Polytechnic school, Warszawa (PL)



Highlight Towers, Munich (D)



**Atrium Business Centre,
Warszawa (PL)**

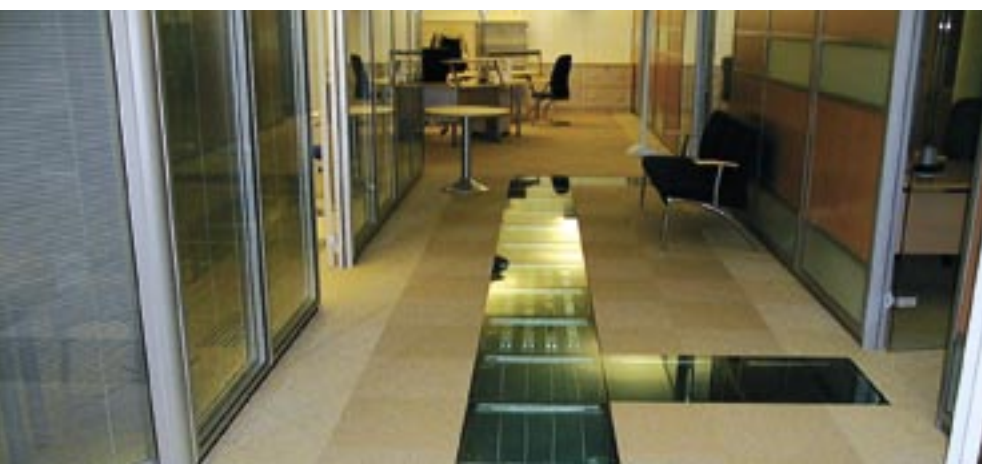


GIFAfloor DB

GIFAfloor panelled access floor panels – All advantages at a glance

- Optimum access to underground installations, as every element can be removed separately
- Can be combined with **GIFAfloor** sheet-panelled access floors, e.g. upon request, the appropriate transition profiles can be supplied for installation runs
- Application areas: switch rooms, media and research centres, installation-intensive corridor and building areas, as inspection elements in **GIFAfloor** sheet-panelled access floors
- Delivered as oversize green ware for standard grid 600 x 600 mm
- Standard thickness: 13 - 40 mm, **new: 42 mm**
- Systems with **GIFAfloor** panelled access floor panels up to fire resistance class F60 (acc. to DIN 4102) available

Rondo 1, Warszawa (PL)





Office building, Stadtoldendorf (D)





GIFAfloor FHB

Sheet-panelled access floors

GIFAfloor FHB, F181

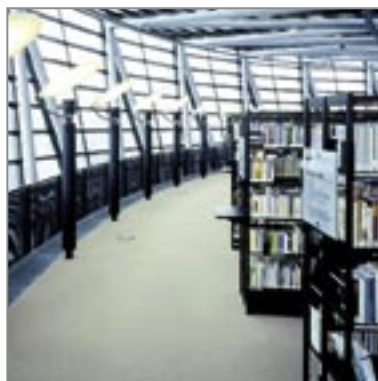
All advantages at a glance

- Increased laying efficiency on account of board dimensions 1200 x 600 mm
- High laying security due to bracing
- Greater loading capacity also with comparatively less board thickness (stabilizing effect on account of glued tongue and groove fixing)
- Level evenness thanks to the calibrated board thickness and tongue and groove structure
- High security on account of system components that are coordinated to one another and inspected
- Fire resistance class at least F30 (acc. to DIN 4102)
- Possible to erect dry walls (stud partition systems) directly on the **GIFAfloor** sheet-panelled access floor
- Ramps, slopes and terracing possible
- Can be combined with **GIFAfloor** panelled access floors, and the appropriate transition profiles can be supplied upon request
- Possible to position inspection openings, electrants and other outlets at any point in the floor, appropriate inspection frames can be supplied upon request
- Application areas: installation-intensive buildings, throughout surfaces for individual floor coverings
- Board dimensions: 1200 x 600 mm and 600 x 600 mm with tongue and groove
- Standard board thickness: 25 mm, 28 mm, 32 mm

Training center, Milan (I)



City / State library Dortmund (D)





Seafood Restaurant & Art Deco Hotel del Lago, Melide (CH)



Production line laboratory, Amfilochia (GR)



GIFAfloor LBS

Linear bearing systems

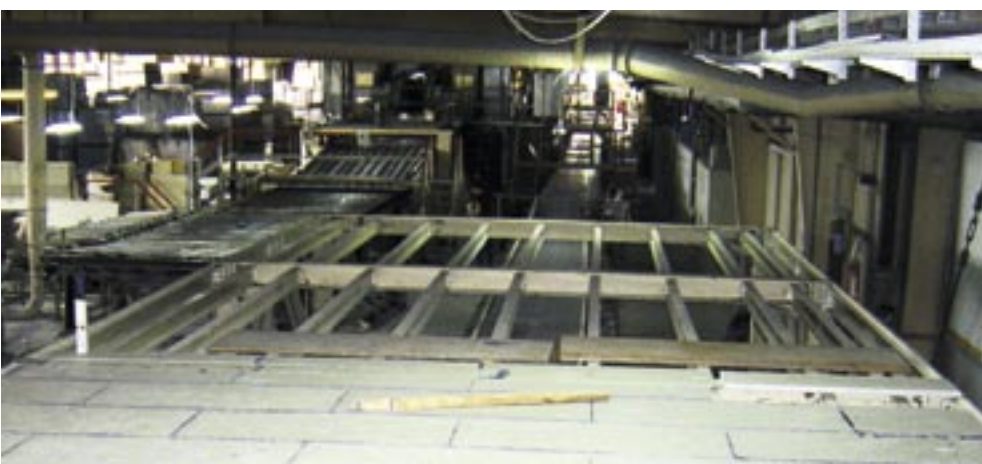
GIFAfloor LBS, F191

All advantages at a glance

- high-performance installation by the dimension 600x1200mm of the panels
- safe connection of the panels by glued tongue and groove system
- load bearing area non-combustible
- applicable on different load bearing structures
- high performance in acoustical behavior by separation of the **GIFAfloor** from the building
- high load bearing capacity for maximum supporting grid 1200mm
- single layer flooring system
- low dimension changing values by changing hygrothermal conditions
- floor coverings to be put directly onto **GIFAfloor**

Burberry's, Athens (GR)

University Bolzano (I)





Bavarian Parliament, Maximilianeum, Munich (D)



**European academy,
Bolzano (I)**



GIFAfloor BAT

Stages, ramps, stairs

GIFAfloor BAT, F192

All advantages at a glance

- high-performance installation by the dimension 600x1200mm of the panels
- load bearing area non-combustible
- installation of floor coverings could be prefabricated in a workshop
- high level of prefabrication
- short term for installation
- easy to uninstall
- noticeable reduction of weight
- surface areas and risers made by the same material
- straight and curved forms are productible
- direct fixture of the chairs to the **GIFAfloor** panels
- high pull off strength by the toughness of the material

**Festival performance house,
St. Pölten (A)**



